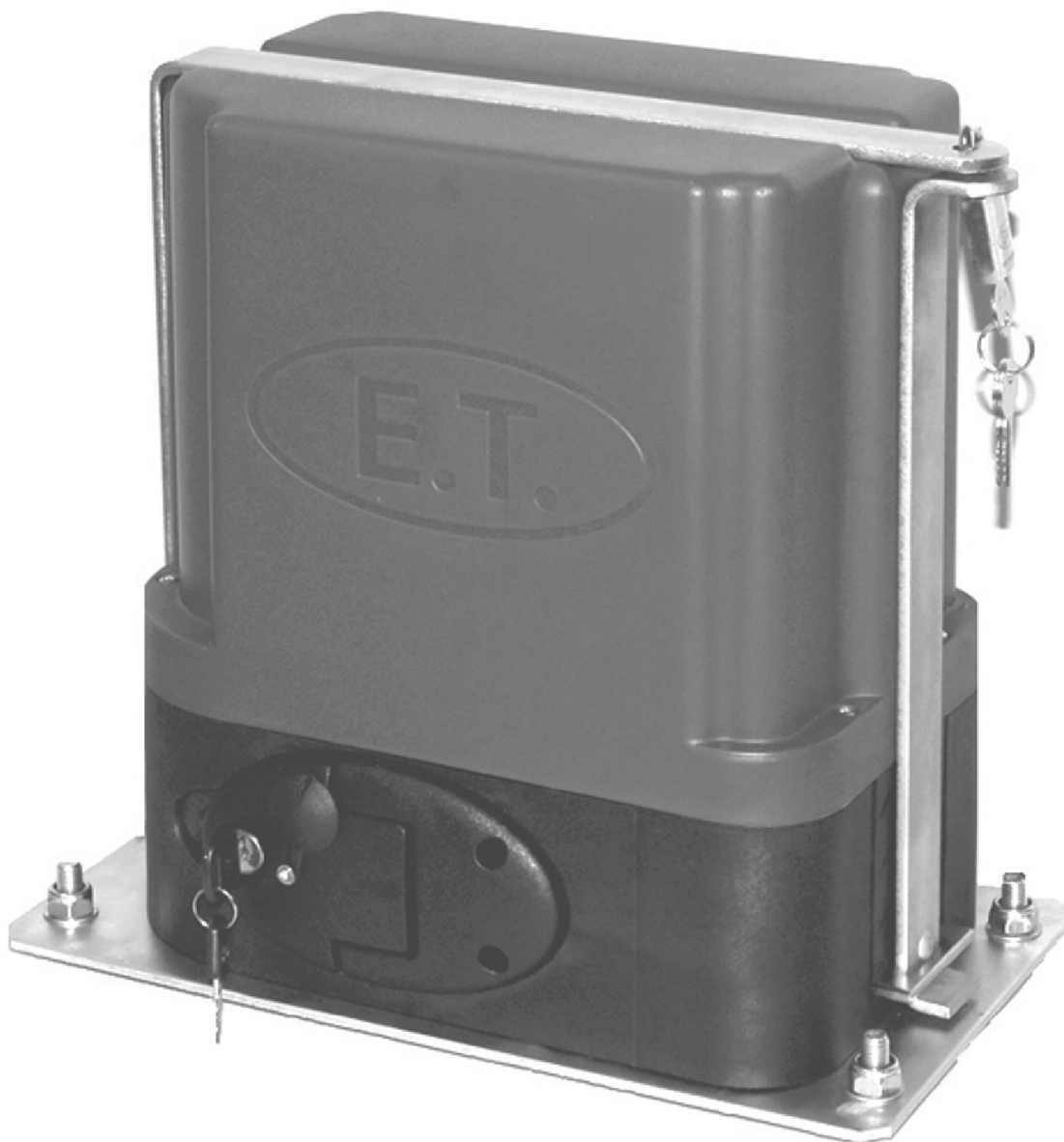


take control of your world

# ET-500-PLUS AUTOMATIC SLIDE GATE MOTOR

USER'S MANUAL  
FOR ET-500 12V & ET-500 ACDC MODELS



**E.T.**  
SYSTEMS

REVISED DATE: August 2007

## **ONE-YEAR MANUFACTURER'S WARRANTY**

- All goods manufactured by G & C Electronics cc t/a E.T. Systems carry a 12 month factory warranty from date of invoice.
- All goods are warranted to be free from faulty components and manufacture.
- Faulty goods will be repaired or replaced at the sole discretion of E.T. Systems, free of charge.
- This warranty is subject to the goods being returned to the premises of E.T. Systems via your service provider.
- In the event of the goods being supplied by dealer, merchant, agent or duly appointed installer of E.T. SYSTEMS, the claim must be directed to that supplier.
- The carriage of goods is for the customer's account.
- This warranty is only valid if the correct installation and application of goods, as laid out in the applicable documentation accompanying said goods, is adhered to, and does not cover any damage caused by handling, installation or Acts of God.
- All warranty claims must be accompanied by the original invoice.
- The liability of E.T. SYSTEMS and/ or their distributors is limited as herein set out. E.T. SYSTEMS and/ or their distributors will not be liable for consequential or incidental damages howsoever arising.

## **RETURN OF GOODS**

- All goods to be returned as supplied.

## **REMOTE CONTROL FEATURES**

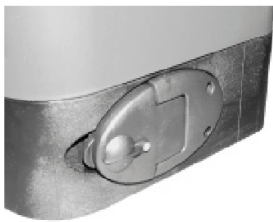
**Full open** - Momentarily press and release the button on your remote transmitter that has been setup for full opening.

**Pedestrian opening/partial open**- Momentarily press and release the button on your remote transmitter that has been setup for pedestrian access.

**Autoclose override**- (Not available in Condominium/Loop mode) When the gate reaches the full open position, press and hold the full opening button on your transmitter until the buzzer beeps confirmation. To re-instate the autoclose momentarily press and release the full opening button.

**Holiday lockout**- (Not available in Condominium/Loop mode) With the gate in the full closed position press and hold the pedestrian button of the remote until buzzer beeps. This will lock out any opening inputs including the test button on the board. The buzzer will beep when attempting to operate the motor when locked. To re-instate normal operation press and hold the pedestrian button until the buzzer starts 5 long beeps to indicate unlocking.

## **HOW DO I RELEASE THE MOTOR TO USE MY GATE MANUALLY?**



Locked  
and engaged



Insert key and turn  
clockwise



Pull door to release

**The manual release in the open position also deactivates the electronic control. To operate the unit normally the release door must be fully closed.**

**Remember to gently push or pull the gate until the gearbox re-engages before running the motor. The gears will lightly click into place.**

## Audible Troubleshooting Guide

	<b>Tone and Action</b>	<b>Condition</b>	<b>Action To Remedy</b>
<b>A</b>	1 x long beep on closing of manual release door	Control card has reset and is ready for next command	The next trigger will cause the gate to crawl until closed limit is found. Continue normal use after gate is fully closed.
<b>B</b>	1, 2, 3, 4 or 5 short beeps on first trigger after reset tone	Control card is confirming load sensitivity to physical obstructions 1 = most sensitive; 5 = least sensitive	If satisfied with safety sensitivity, continue normal use. If not, contact your service provider.
<b>C</b>	2 x long beeps after a trigger and before gate starts moving	Mains power interruption	Restore mains power.
<b>D</b>	3 x rapid beeps and gate won't open	Holiday lock-out is active	De-activate holiday lock-out by pressing and holding pedestrian trigger until the control card begins 5 long tones. At start of the first tone, release the trigger.
<b>E</b>	1 x continuous tone as long as gate trigger is depressed and gate won't move	Maximum closing collisions exceeded.	Manually release the gearbox and slide gate away from obstruction. Clear obstruction. Re-engage the gearbox and continue use. If problem repeats, contact your service provider.
<b>F</b>	Gate stops moving, followed by 1 x long beep	Battery depleted	Allow 8 hours recharge time with household mains present. If problem remains after 8 hours, contact your service provider to purchase a new battery.

## STATUS LED INDICATION

<b>LED Condition</b>	<b>Gate Condition</b>
OFF	Gate closed
ON	Gate open
1 sec flashes	Gate in operation
2 flashes per sec	Obstruction

The ET-500-PLUS is designed to be maintenance free. However, there are some basic installation checks that should be carried out regularly (every three months) which will increase the long term reliability of your equipment and prevent intermittent operation.

## **NB: ISOLATE MAINS SUPPLY TO SYSTEM BEFORE CLEANING OR WORKING ON THE EQUIPMENT**

### **1. GENERAL**

- 1.1 Keep the bottom track clear of stones, dirt and obstructions. Ensure that all rollers are free, sturdy and no wheel bearing has seized.
- 1.2 In manual mode, check that the gate runs freely on its track and does not snag against walls, posts or shrubs.
- 1.3 Ensure that the gate limits are positioned correctly and the gate does not bang into either the open or closed end stops during normal operation.
- 1.4 Keep shrubs and vegetation clear of the motor and upper geared rack.
- 1.5 Check that the manual override operates freely. Spray with oil if necessary.
- 1.6 Keep the inside of motor housing clear of insects and dust.

### **2. THE BATTERY**

- 2.1 The ET -500-PLUS is fitted with a maintenance-free lead acid battery.
- 2.2 However, if the motor has been used on battery back-up for extended periods without charging, the life span of the battery can be shortened. So it is important that the motor is supplied with its own fixed household power point and is not shared where it can be regularly disconnected.

### **3. PRECAUTIONS**

- 3.1 DO NOT:**
- a) oil or lubricate the nylon upper geared rack
  - b) spray insecticides on or near the electric components. Rather spray insecticides around the base on the outside of the motor.

*HOT TIP: Place mothballs in the motor base to minimise infestation of insects and other creatures.*





Date of Installation	
Serial Number	
Manual Release Key Number	



ET Systems Products  
are  
Proudly Imported and Marketed  
throughout New Zealand  
by



**A** 2/89 Roseberry Avenue, Birkenhead, Auckland, 0628  
**M** PO Box 340 037, Birkenhead, Auckland  
**T** 09 419 5483 **F** 09 419 5488  
**E** [info@gatedrivesolutions.co.nz](mailto:info@gatedrivesolutions.co.nz)  
**W** [www.gatedrivesolutions.co.nz](http://www.gatedrivesolutions.co.nz)